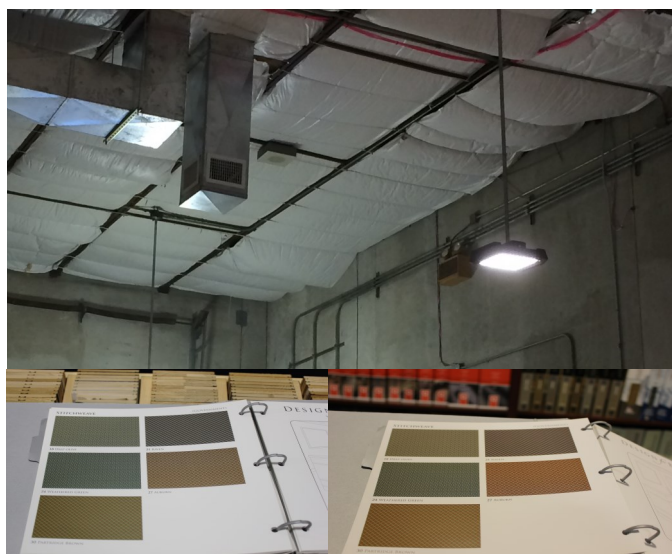


- Lighting Analysis and Design
- Financial and ROI Analysis
- Multiple fixture types, and light distribution options
- Color temperature and CRI options to meet application requirements
- Fixture replacement or existing retrofit options available
- Financing available

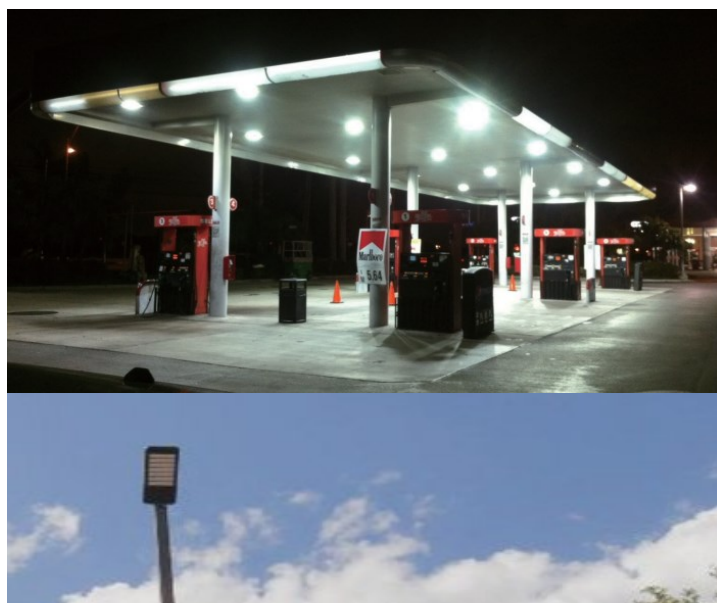
Product Description

We understand choosing the right LED replacement is not easy. FOS LED Lighting can help your company select the right LED solution for your application. From color temperature, lumens, and CRI requirements we've got you covered with our custom LED solutions reaching lumen efficiencies of up to 140 Lm/Watt.

LED Lighting can save significant costs in electricity, A/C heat load and maintenance labor. We can help your company achieve savings of \$100 to over \$300 per fixture annually in your industrial space.



Untouched photo of metal halide rendering (left) versus high CRI LED solution (right)





Standard Wallpack
18-25 Watt Models



Standard Wallpack
43-125 Watt Models



Full Cut-Off Wallpack
43-125 Watt Models

Product Description

FOS utilizes trusted CREE LEDs along with a MeanWell driver for ultimate performance and life. The fixture is maintained with positive cooling technology that not only reduces thermal wear on the LEDs but also helps to maintain a dryer enclosure environment. A powder coated, precision die-cast aluminum finish coupled with a glass lens ensures a rugged fixture for all outdoor environments. Photocell/sensor installation is optional and may be installed on one of many threaded and plugged ports on the fixtures.

Product Specifications

Input Voltage	100 –277 VAC (347-480VAC Option on 75 and 125Watt models)					
Total Power	18 Watts	28 Watts	43 Watts	75 Watts	95 Watts	125 Watts
Delivered Light	1,650 lm	2,380 lm	3,655 lm	6,375 lm	7,400 lm	10,200 lm
Replaces (Metal Halide or HPS)	50-70 Watt	70-100 Watt	100-250 Watt	250 - 400 Watt	400 - 500 Watt	500 + Watt
Color Temperature	3,000K / 4,1000K / 5,500K / 6,000K					
Certifications	UL, cUL, IP65, DLC (on select color temperatures), LM79, LM80 Reports Available					

Part Numbering: FOS-xxx-ppp-ct-pc-vvv

xxx: WP = Standard Wall Pack; FCW = Full Cut-Off Wall Pack

ppp: Power = Enter Wattage (18, 28, 43, 75, 95, or 125)

ct: Color Temperature (30=3000K, 41=4100K, 55=5500K, 60=6000K)

pc: PhotoCell (00=No; 01=yes)

vvv: Voltage (100=standard, 300=347-480VAC Option)

Example: FOS-WP-95-55-00-100 (Standard Wall Pack, 95 Watts, 5500K, no photocell, 100-277VAC)